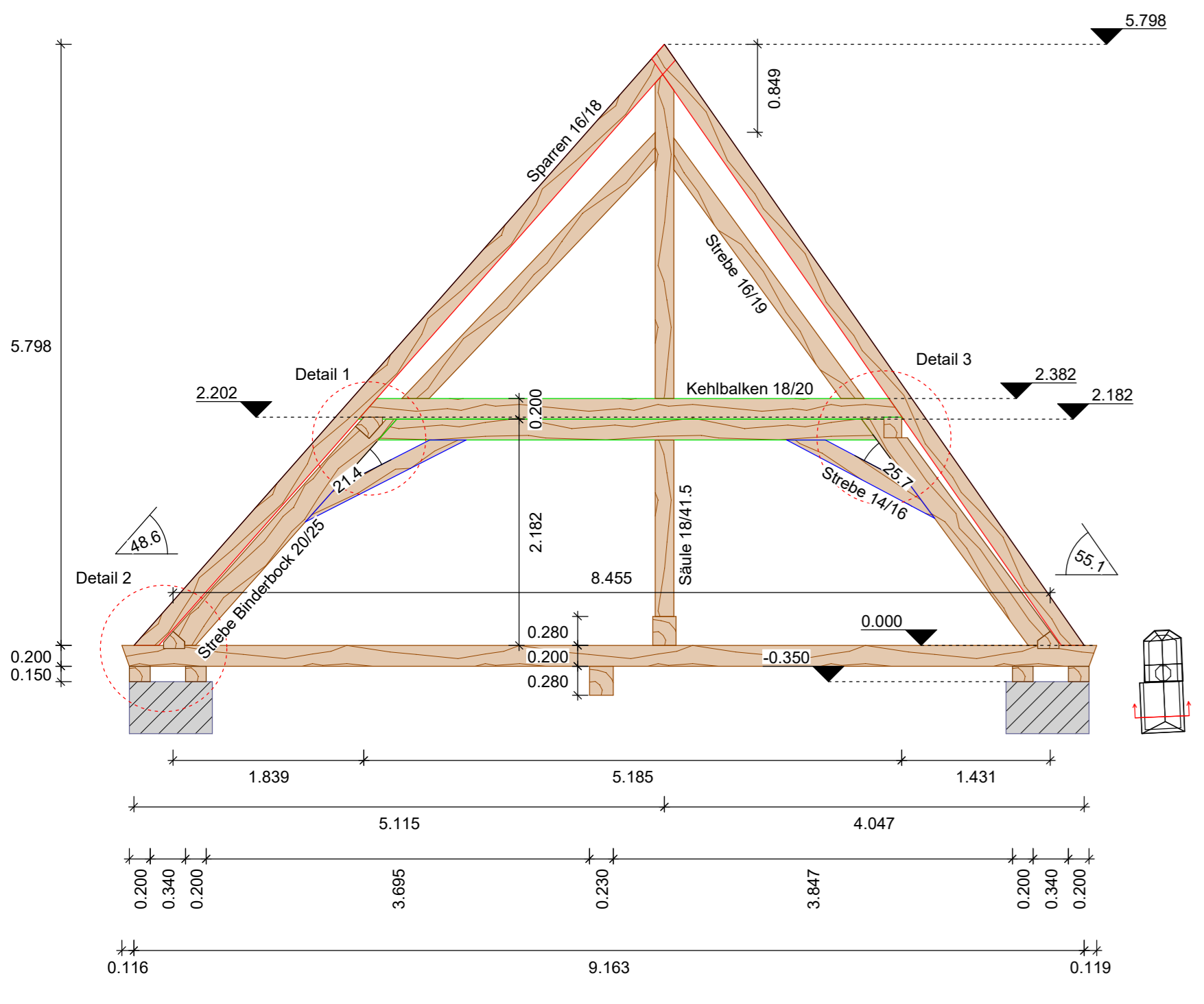
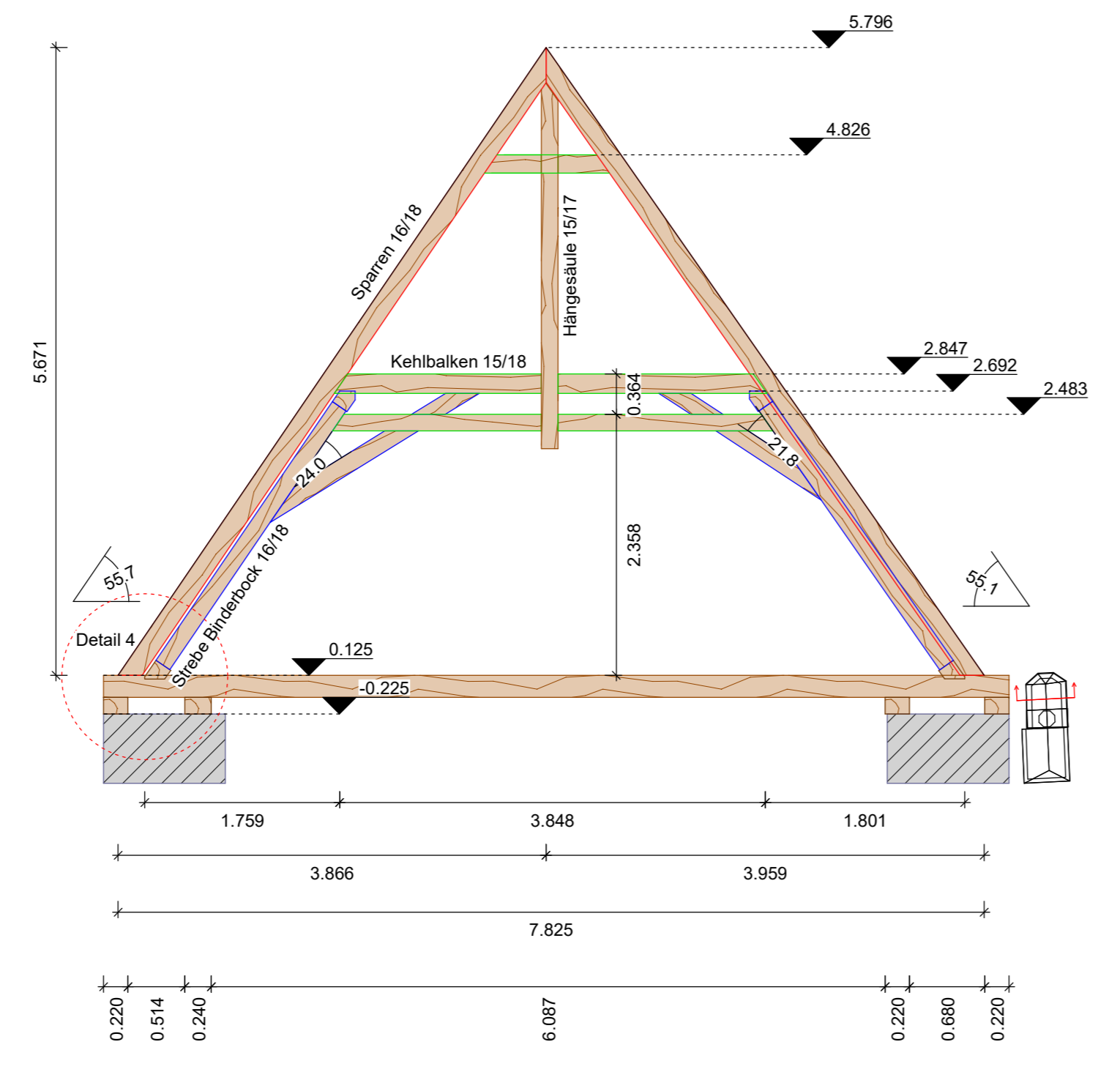


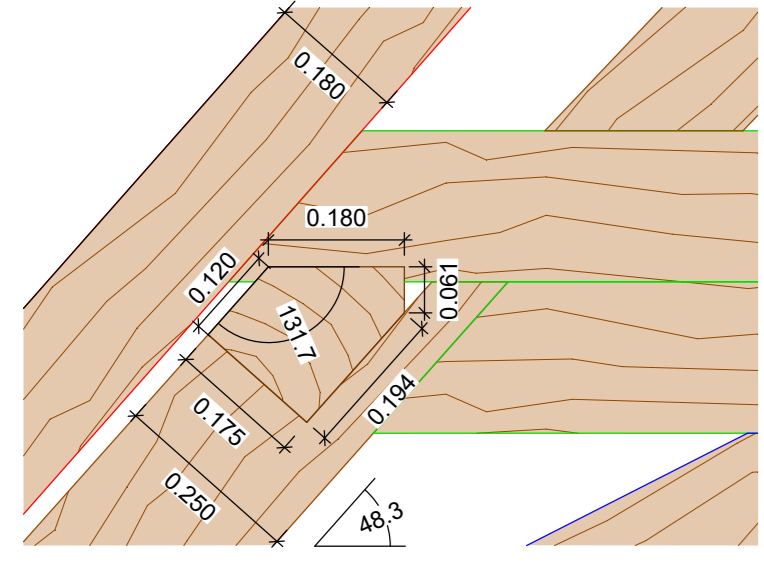
Schnitt: A - A
Maßstab: 1 : 50



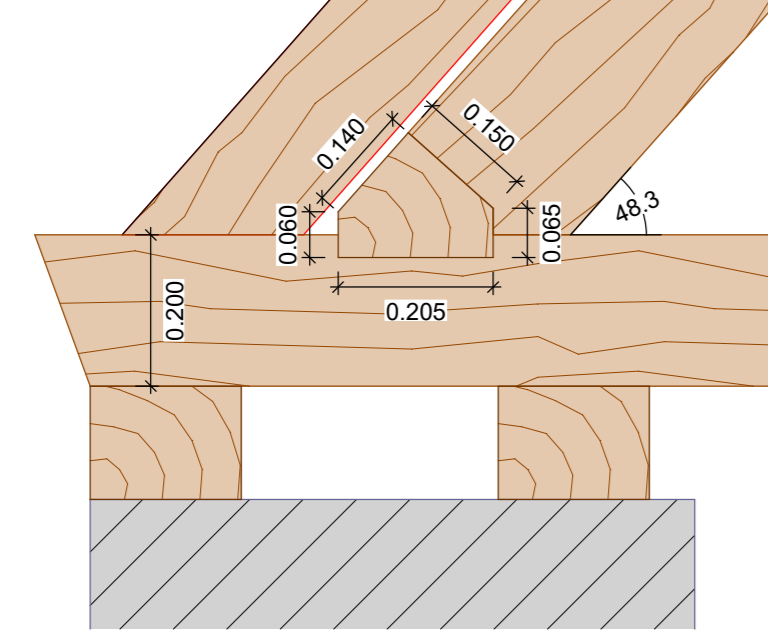
Schnitt: C - C
Maßstab: 1 : 50



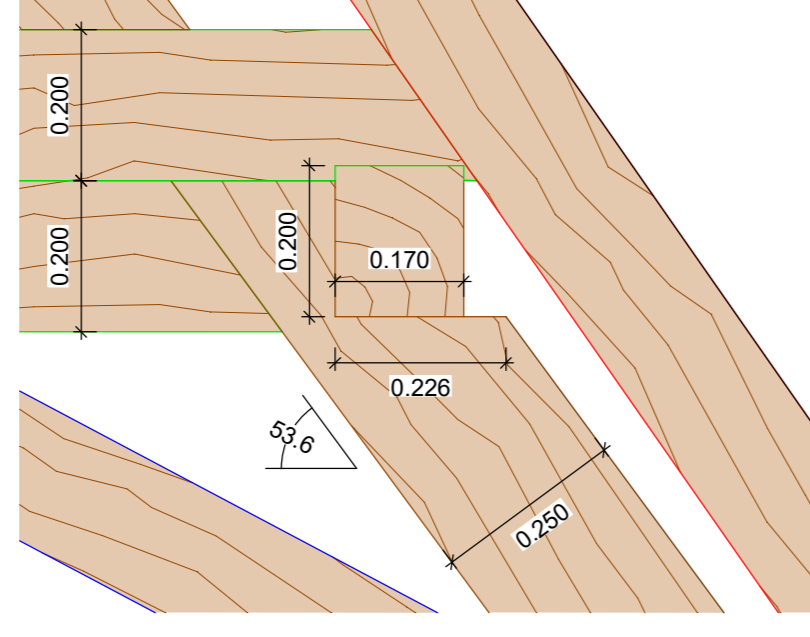
Detail 1 (Maßstab 1:10)



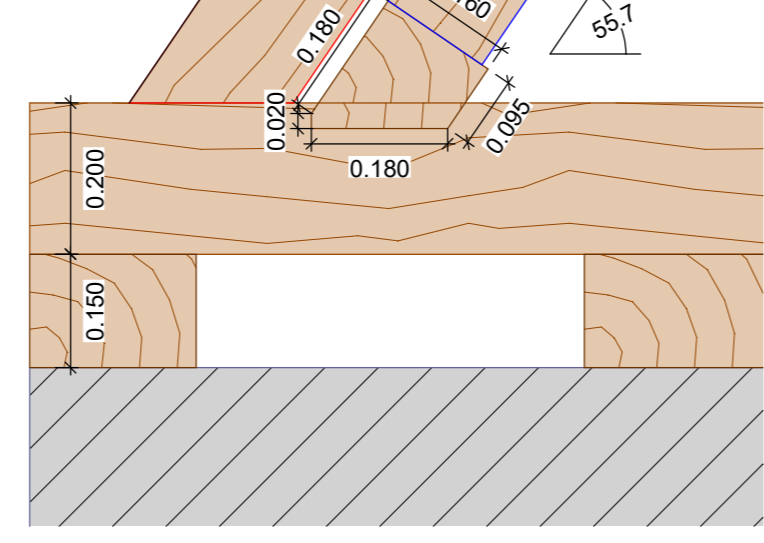
Detail 2 (Maßstab 1:10)



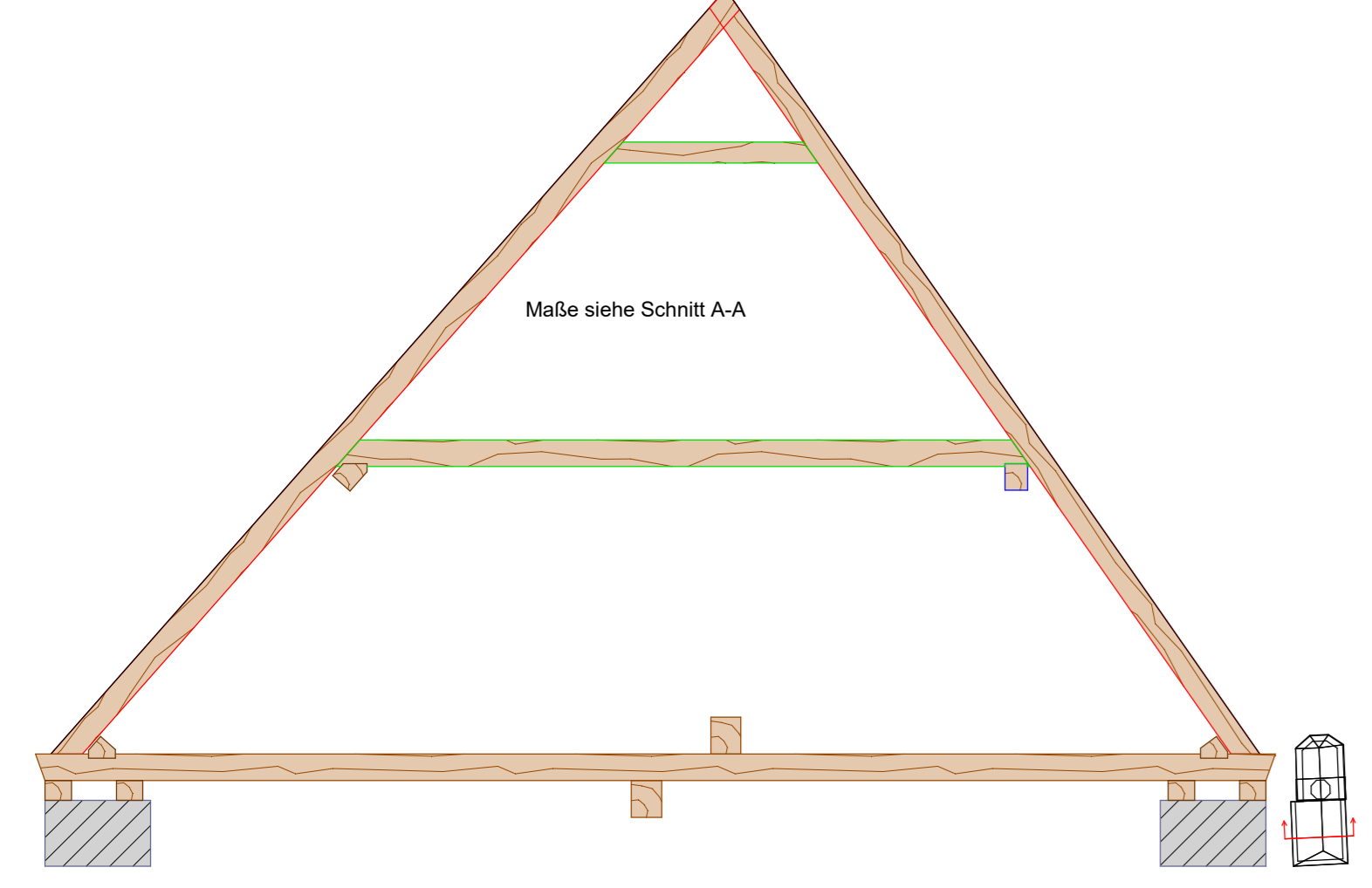
Detail 3 (Maßstab 1:10)



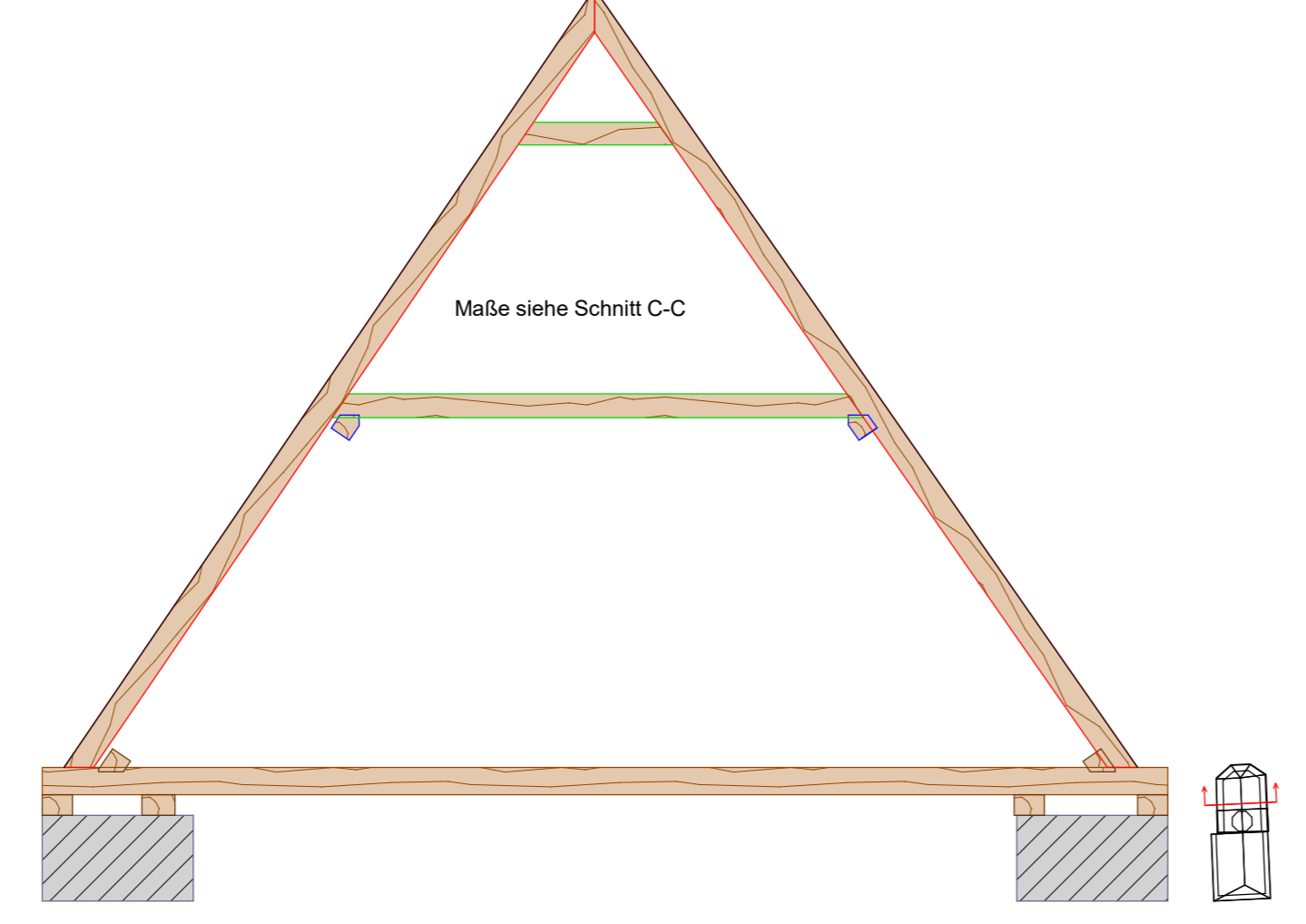
Detail 4 (Maßstab 1:10)



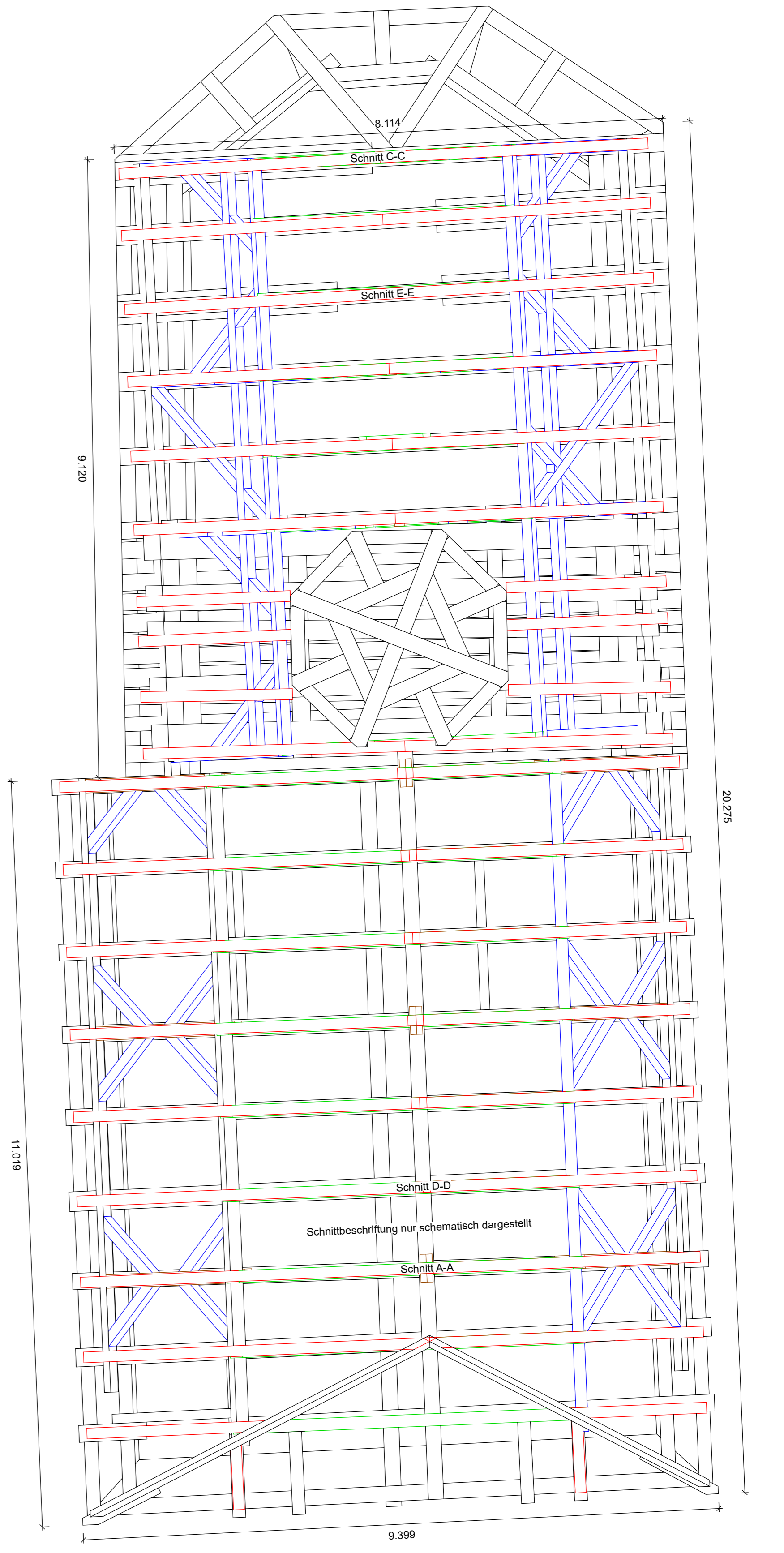
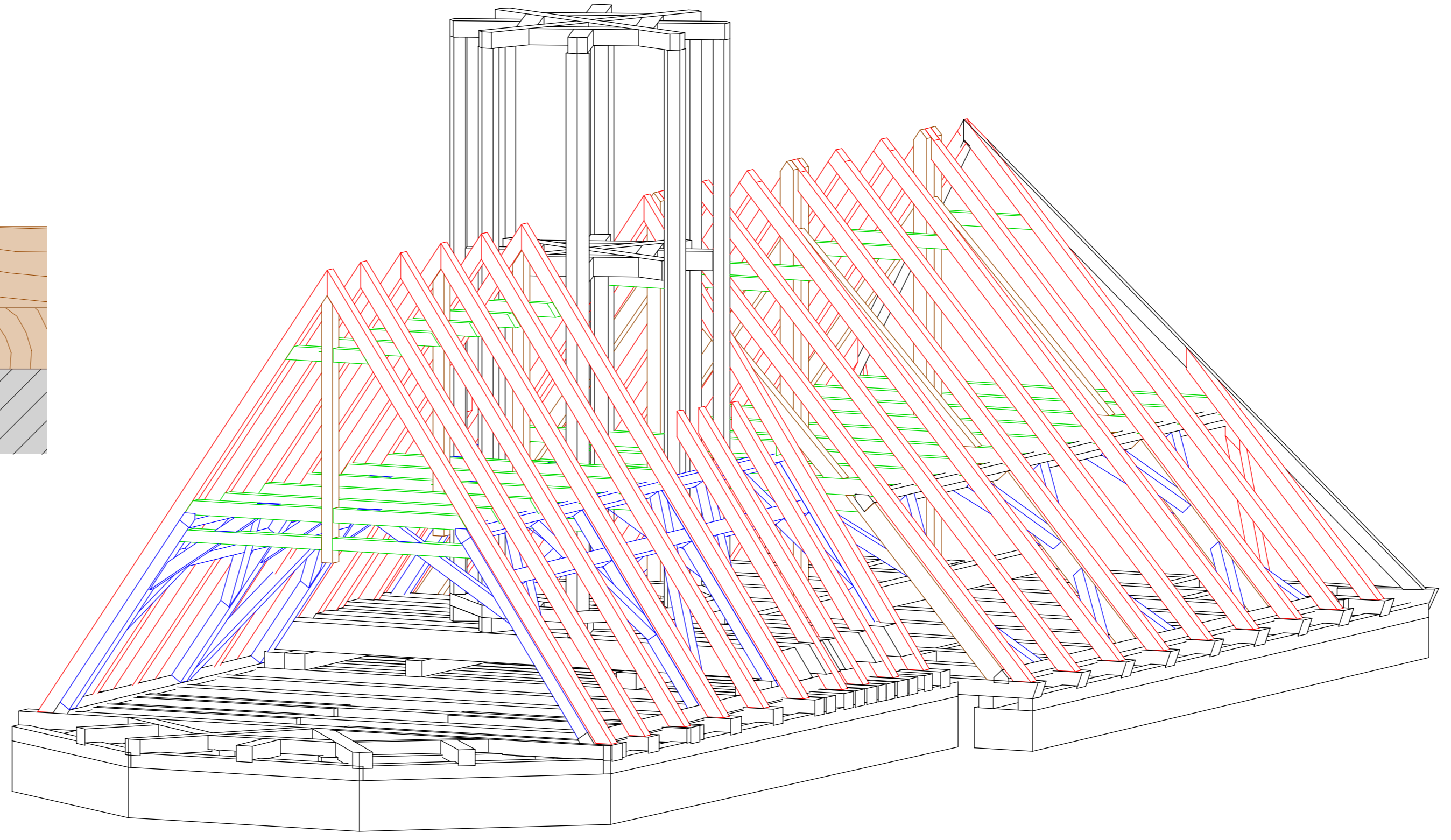
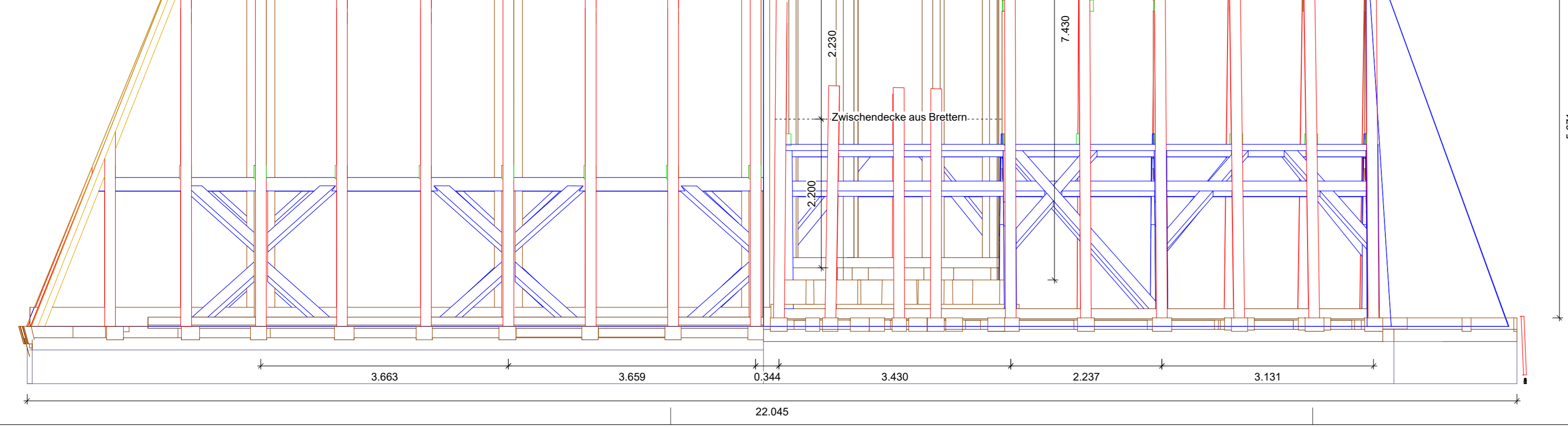
Schnitt: D - D
Maßstab: 1 : 50



Schnitt: E - E
Maßstab: 1 : 50



Schnitt: F - F
Maßstab: 1 : 50



Maßstab: 1 : 50

